



# Installing USB Drivers

This procedure applies only to Windows XP operating systems.

The first time that you use Motorola's Software Update, you are prompted to install the USB drivers that are required (the USB drivers are automatically installed for Windows 2000 operating systems). Follow the steps in this procedure and then return to the update procedure.

## USB drivers for Q devices

Motorola Flash Interface  
Flash Baseband Interface  
Flash Operation System Interface

## USB drivers for all other devices

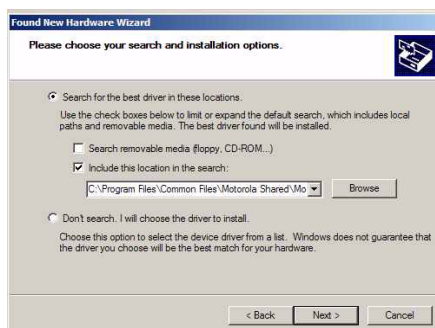
Data Logging MCU Interface  
Test Command Interface  
Accessories Interface  
Motorola Flash Interface

## Install the Drivers

- 1 During the first time that you use Motorola's Software Update, the welcome screen for the Found New Hardware Wizard appears. **Motorola USB Modem** is listed in the screen. Click **Install from a list or specific location (Advanced)** and then click **Next**.

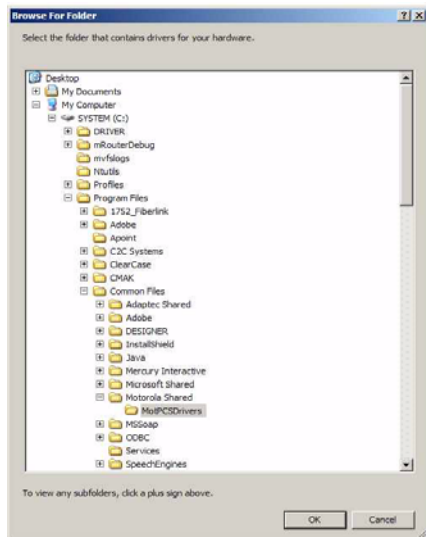


- 2 Clear the **Search removable media** check box, select the **Include this location in the search** check box, and then click **Browse**.



- 3 Browse to the following location and then click **OK**:

C:\Program Files\Common Files\Motorola Shared\MotPCSDrivers



- 4 Click **Next** to install the driver.



- 5 Repeat these driver installation steps for the remaining drivers (see the list of drivers preceding these steps). The Found New Hardware Wizard leads you through the steps. When finished, exit from the wizard to return to the software update process (see "Update the Device" on page 14).

